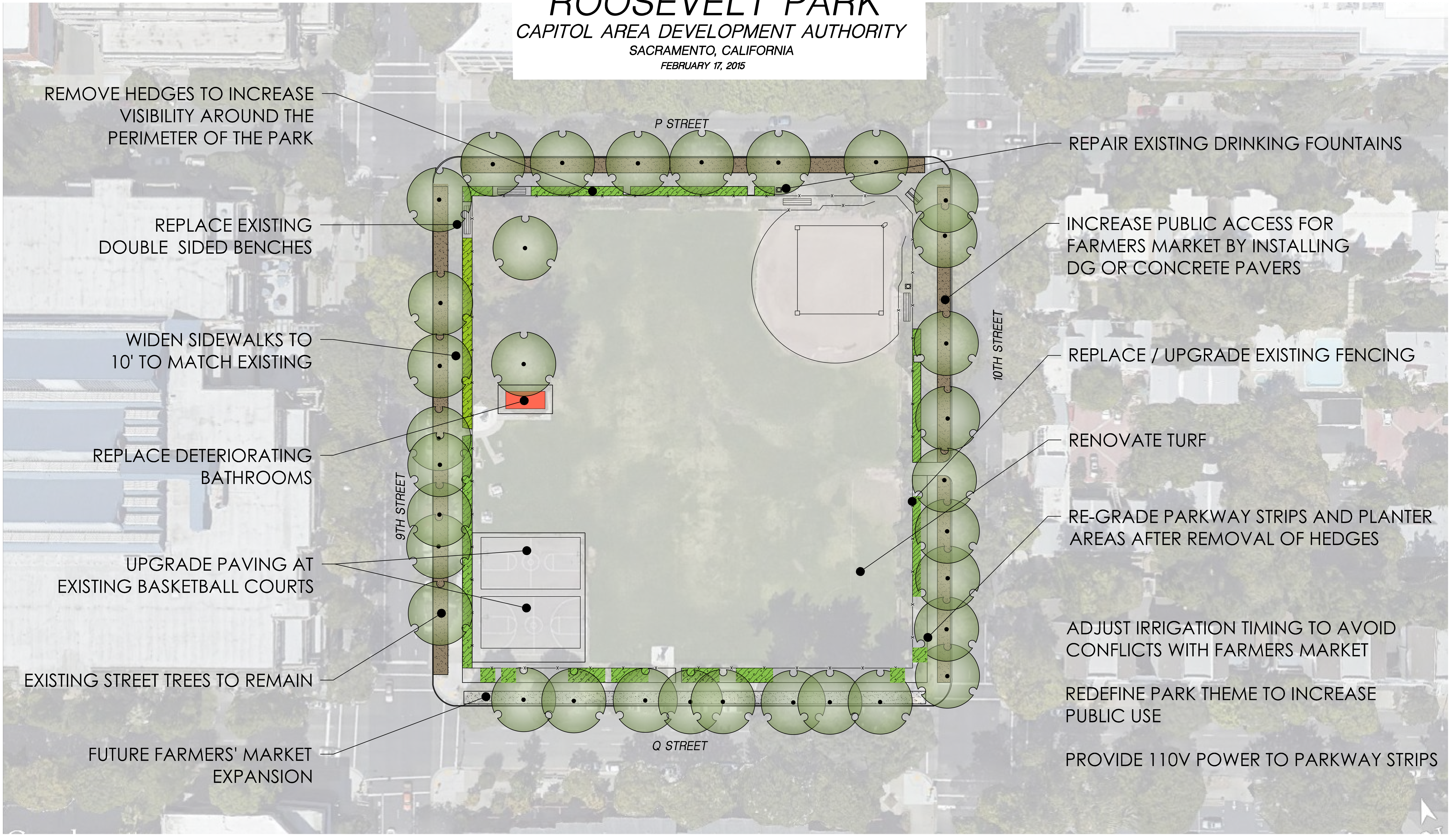


OPPORTUNITIES & CONSTRAINTS ANALYSIS

ROOSEVELT PARK

CAPITOL AREA DEVELOPMENT AUTHORITY
SACRAMENTO, CALIFORNIA
FEBRUARY 17, 2015



REMOVE HEDGES TO INCREASE VISIBILITY AROUND THE PERIMETER OF THE PARK

REPLACE EXISTING DOUBLE SIDED BENCHES

WIDEN SIDEWALKS TO 10' TO MATCH EXISTING

REPLACE DETERIORATING BATHROOMS

UPGRADE PAVING AT EXISTING BASKETBALL COURTS

EXISTING STREET TREES TO REMAIN

FUTURE FARMERS' MARKET EXPANSION

REPAIR EXISTING DRINKING FOUNTAINS

INCREASE PUBLIC ACCESS FOR FARMERS MARKET BY INSTALLING DG OR CONCRETE PAVERS

REPLACE / UPGRADE EXISTING FENCING

RENOVATE TURF

RE-GRADE PARKWAY STRIPS AND PLANTER AREAS AFTER REMOVAL OF HEDGES

ADJUST IRRIGATION TIMING TO AVOID CONFLICTS WITH FARMERS MARKET

REDEFINE PARK THEME TO INCREASE PUBLIC USE

PROVIDE 110V POWER TO PARKWAY STRIPS